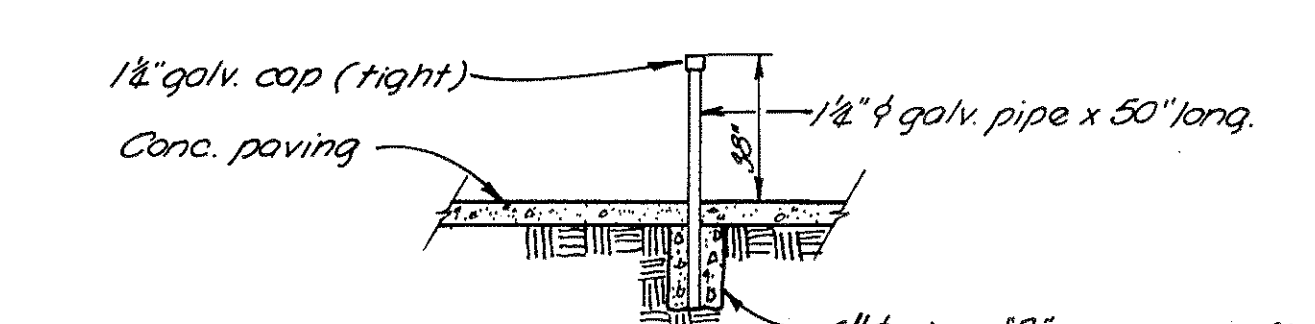


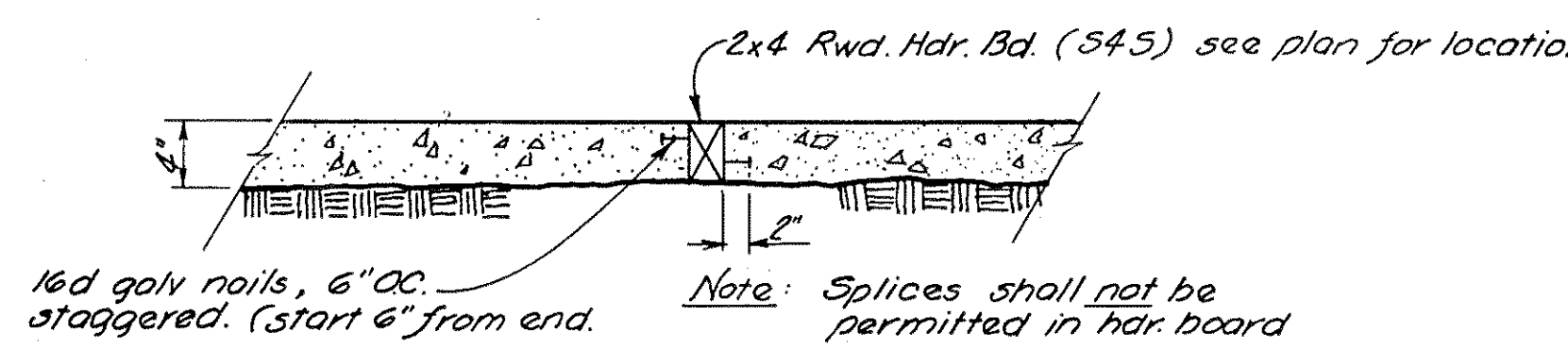
KEY	PAVING AND LIGHTING LEGEND
	Existing tree to remain
	Property line
	Point of tangency along edge of walk
	Concrete paving (Light broom finish), Type 'B' with 2x4 redwood expansion joint. See specifications.
	Type 'A' Street Light to satisfy County street lighting requirements & to be installed by SMUD. (4 req'd)
	175 watt mercury vapor light to be installed by SMUD on existing poles. (4 req'd)
	Park lighting trench by Contractor: The contractor shall: a. be responsible for all trenching and backfilling. b. notify SMUD 72 hours prior to trenching for lighting c. trench 52" deep x 18" wide. d. keep backfill around electrical conduits free of debris and rock for a distance of 6". All compaction shall be 85%.
	Concrete Mowing strip. Type 'B', see specifications.
	Asphalt concrete - Type 'B', see specifications.
	Type 3 Barrier Curb. S.C.5 S.D. No. 2
	Bench - Game Time, model 2151 or equal. Permanent installation with anchor bolts as per manufacturers recommendations. (4 req'd)
	Concrete curb, gutter, and sidewalk, see sheet nos. 3 & 4.
	Detail No. Sheet No.

Notes: 1. All walks shall be a series of smooth curves between tangency points.
2. All new paving shall match existing paving grades with no abrupt change of elevation.

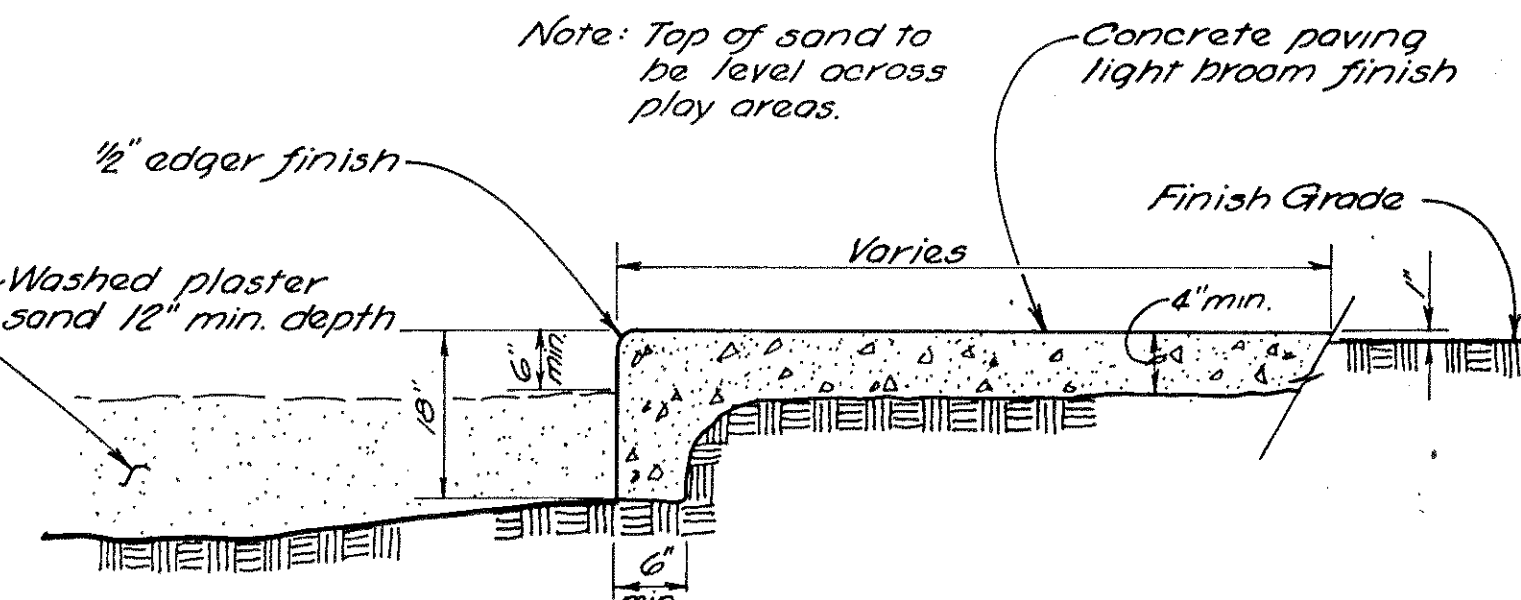
4 CONCRETE MOWING STRIP
Not to Scale



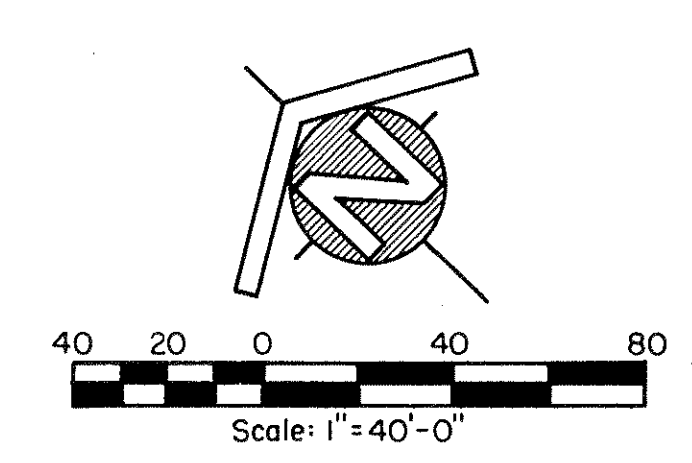
2 STABILIZER FOR TRASH RECEPTACLE DETAIL
Not to Scale



3 CONCRETE PAVING AND EXPANSION JOINT DETAIL
Not to Scale



1 PAVING EDGE AT SAND
Not to Scale



REFERENCE POINT
Bench mark: SAC. CO. #8-31 elev. 127.07
7/8" metal disc located in top of curb.

Consultants

ROCK-CHUN-YEE ASSOCIATES, Inc. *OK*

Ha Gu 7/13/76

ELECTRICAL ENGINEERS

SACRAMENTO, CALIF.

8-5152 JES:JBR YEE

SPRUCE PARK

Sunrise Recreation and Park District

Sacramento County

Dennis Tsuboi & Associates

Landscape Architecture and Environmental Planning

4215 Freeport Boulevard
Sacramento, California
Phone: (916) 452-4205

Sheet title	
PAVING AND LIGHTING PLAN	
Design	EM 12.10.76
Drawn	SM 12.13.76
Checked	DT 1.25.76
Approved	

Sheet **2** Of **10**

P2560-P2560-03-03 OF 11_02

Dennis A. Tsuboi 1076